

Are You Ready For Hurricane Season?

2017 Hurricane Talk



BY: STORM TEAM 8
METEOROLOGIST JULIE PHILLIPS



About Me



- I am Currently a Weekday Meteorologist at WFLA Channel 8. I am on Monday through Friday at 4pm on Channel 8 and at 8 PM on Great 38.



My Background

METEOROLOGIST JULIE PHILLIPS

EDUCATION:

**METEOROLOGY & BROADCAST
JOURNALISM MAJOR AT
THE UNIVERSITY OF MIAMI.**



EXPERIENCE:

3 YEARS AT KTXS IN ABILENE, TEXAS

**ON AIR METEOROLOGIST AT WFLA
SINCE JUNE OF 2013.**

HURRICANE SEASON 2017



- Hurricane Season Begins June 1st and ends November 30th.
- The Peak Activity is usually late August through early October.
- We are no longer in a La Nina weather Pattern like last year.



2017 Hurricane Forecast



	AVERAGE YEAR	NOAA FORECAST	COLORADO STATE FORECAST
NAMED STORMS	12	11-17	15
HURRICAN ES	6	5-9	8
MAJOR HURRICAN ES	3	2-4	3

FORECAST



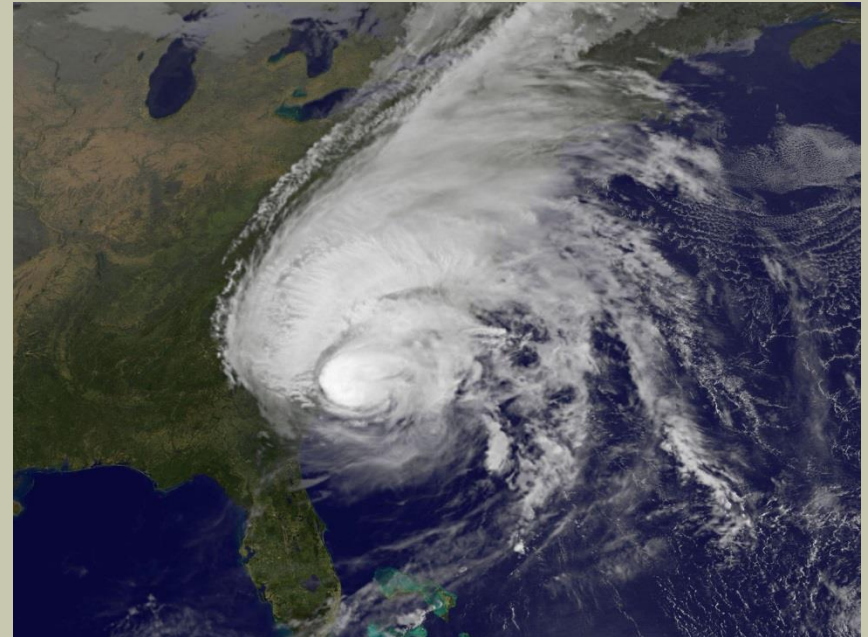
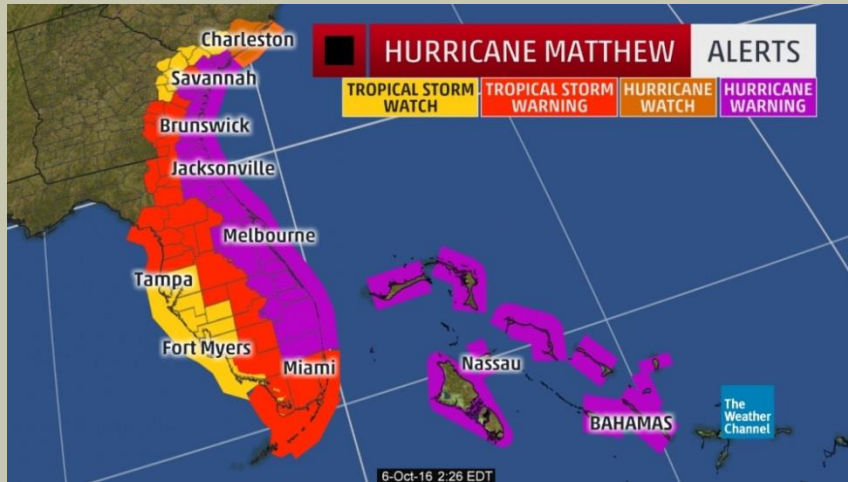
- **COLORADO STATE UNIVERSITY (KLOTZBACH/GRAY) FORECAST WAS UPDATED EARLIER THIS MONTH & MADE FOR A MORE ACTIVE SEASON**
- **LAST SEASON WAS QUITE ACTIVE & 3 STORMS IMPACTED US IN SOME WAY! (COLIN, HERMINE & MATTHEW)**

Hurricane Matthew



At One Point was a Category 5 Hurricane with 160 mph winds!

1 U.S. Landfall in South Carolina as a Category 1 Storm.



Why The Forecast Is Only So Important



- Remember These Forecasts Do Not Predict Landfalls! This is why Coastal Residents **MUST PREPARE** the same each year.
- Remember Andrew? That was a below average year...only 6 Named Storms all season.



When a Storm Is Looming What Do You Need To Worry About?

4 Main Tropical Threats

- 1. Winds**
- 2. Tornadoes**
- 3. Storm Surge**
- 4. Inland Flooding**



Tropical Storm – 39+mph

Category 1 – 74+ mph

Category 2 – 96 mph

Category 3 – 111 mph

Category 4 - 130 mph

Category 5 - 157 mph

Extreme Threat: 3,4, or 5

Structural Damage; Some complete wall or roof failure.

Mobile homes destroyed

Large trees and signs down

Widespread Power Outages



Strong Winds

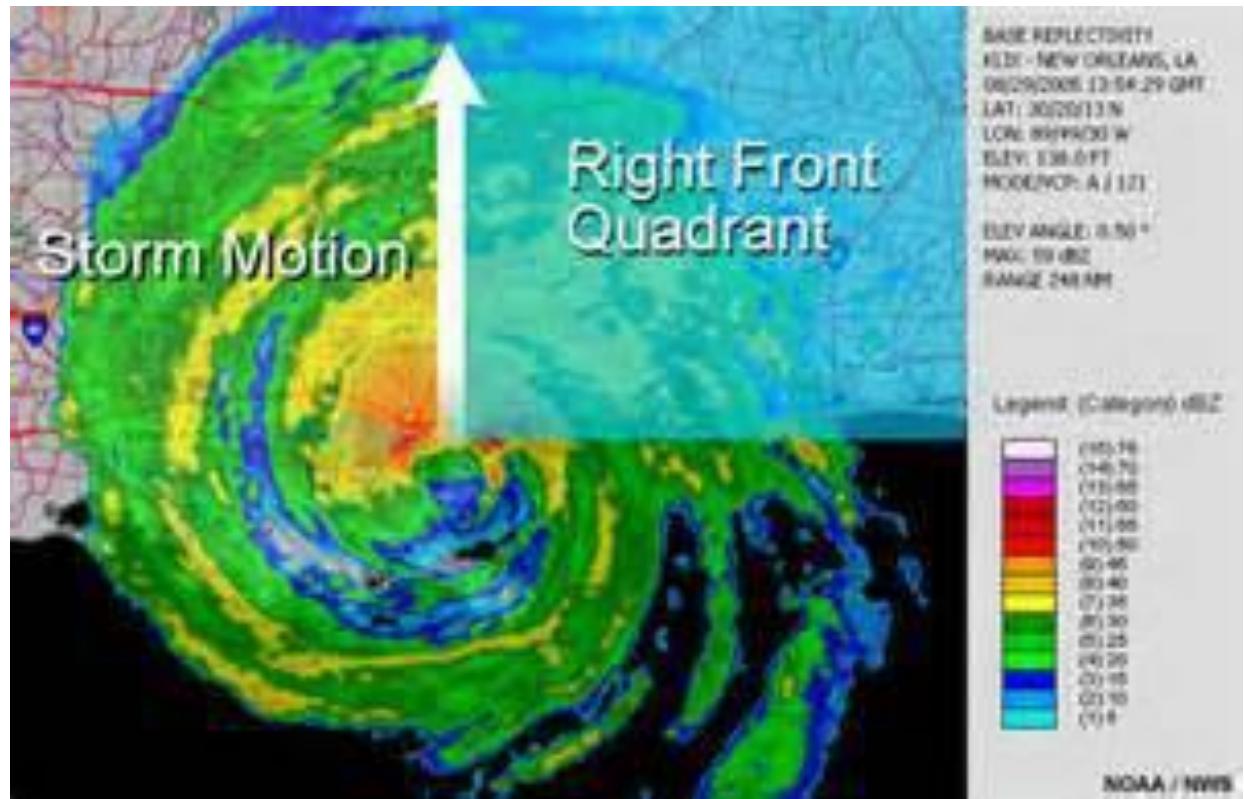


Tornado Watches are common in NE quadrants of tropical systems.

The motion of the winds moving onshore enhances wind shear within the storm.

Most tornadoes produced in tropical systems are short-lived and on the weak side.

Still a MAJOR threat though, even in tropical storms.



Tornadoes



Probably the **GREATEST** Threat to property & your life during a hurricane along coast.

Strong winds push water toward the coast causing a rise in sea level. Especially troublesome during high tide.

Forecasting is complex because you must factor in the sea floor and features like Bays...

Tampa Bay Area is extremely vulnerable to Storm Surge! Cat. 1 could create a 7 ft. surge...Cat 5 a 28 ft surge in Hillsborough County.



Storm Surge



"In the last 30 years, inland flooding has been responsible for more than half the deaths associated with tropical cyclones in the United States."

Ed Rappaport
National Hurricane
Center

The Category of a storm says NOTHING about this threat. Slow moving storms of any strength can create major flooding

Remember 2 feet of water can carry away most cars...even SUV's!



Inland Flooding



After a long streak of 12 years Hurricane Hermine hit Florida in 2017.

That was the longest we have gone without a hit, since we have been keeping records in the 1850s!

Also the last big hurricane to hit near the Tampa Bay area was Charley in 2004 in Punta Gorda.



Don't Be Unprepared For The Next Big Storm!

NOW IS THE TIME TO PREPARE



Have a Family Plan and Supplies to Last you through the storm. In Tampa Bay that could be 10 days!

- **Look into alternative phone chargers. Like solar powered ones.**
- **CASH IS NEEDED.**
- **Be Sure Others Know your plan!**
- **Keep your important documents in a safe with you. Safety Deposit Boxes were compromised in Katrina.**

NOW IS THE TIME TO PREPARE



“ THE FIRST 72 IS UP TO YOU ”

- **Reinforce your Garage Door if Possible. It can pop off your roof in a storm!**
- **Get your old family pics scanned into the computer.**
- **If you have time snap pictures of items inside your house before the season even starts! This will help after the storm.**

2017 Hurricane Season



SOCIAL MEDIA

FACEBOOK: BE SURE TO LIKE MY PAGE WFLA JULIE PHILLIPS, SHARE PHOTOS THERE AND ASK QUESTIONS!

**TWITTER:
WFLAJULIE PLEASE FOLLOW ME FOR STORM UPDATES!**